

SOFTDASH FOR POCKET PC SOFTWARE MANUAL

CONNECT²CAR

7/1/2007

SOFTDASH USER'S GUIDE FOR POCKET PC
Rev A, Issue 1

TABLE OF CONTENTS

1. REQUIREMENTS	2
<i>a. For The Computer</i>	2
<i>b. For The Wireless Pocket PC Device</i>	2
<i>c. For The Wireless Multi-Function Controller (MFC)</i>	2
<i>d. For The Wired Pocket PC Device</i>	2
<i>e. For The Wired Multi-Function Controller (MFC)</i>	2
2. THE INSTALLATION PROCESS FROM THE COMPUTER	3
<i>a. Extracting The Zipped Files</i>	3
<i>b. Installing SoftDash Onto The Pocket PC</i>	4
i. SUPERWABA INSTALLATION.....	5
ii. SOFTDASH INSTALLATION.....	6
3. SETTING-UP ON THE POCKET PC	
<i>a. Establishing A Communication Connection</i>	
<i>b. Controlling the MFC</i>	
4. FREQUENTLY ASKED QUESTIONS	11

“To have a better understanding of the purpose of these instructions; “if you do not have advanced experienced with using a Pocket PC and/or connecting a computer to a Pocket PC” we recommend that you read all of the direction below, from beginning to end, before starting.

1. REQUIREMENTS:

a. For The Computer...

- Operating System: 2000, ME, XP, 2003 Server, (not Vista)
- 25MB of free hard drive space
- An open/unused USB port
- Microsoft ActiveSync, which comes on the software CD, provided which your Pocket PC device or it can be downloaded from microsoft.com
(https://www.microsoft.com/windowsmobile/downloads/eula_activesync45_1033.msp?ProductID=76)

{WIRELESS}

b. For The Wireless Pocket PC Device...

- Operating System: Windows Mobile 5
- Class:2 Bluetooth®, as this is needed to connect to the MFC
- Internal Storage Memory should have 2.25MB of free space
- Internal Program Memory should have 0.96MB of free space
- USB cable for PC connection
- ActiveSync Installed

c. For The Wireless Multi-Function Controller (MFC)...

- The MFC module (powered on)
- The Bluetooth® antenna with the green light on, indicating power-on
- **NO** serial cable connected into the serial port

{WIRED}

d. For The Wired Pocket PC Device...

- Operating System: Windows Mobile 5
- Internal Storage Memory should have 2.25MB of free space
- Internal Program Memory should have 0.96MB of free space
- USB cable, for PC connection
- Pocket PC to (Female DB9) Serial cable, for MFC connection
- Check your Pocket PC device user’s manual for directions on how to connect to an external device via the serial cable.
- ActiveSync Installed

e. For The Wired Multi-Function Controller (MFC)...

- The MFC module (powered on)

Click [Next >]



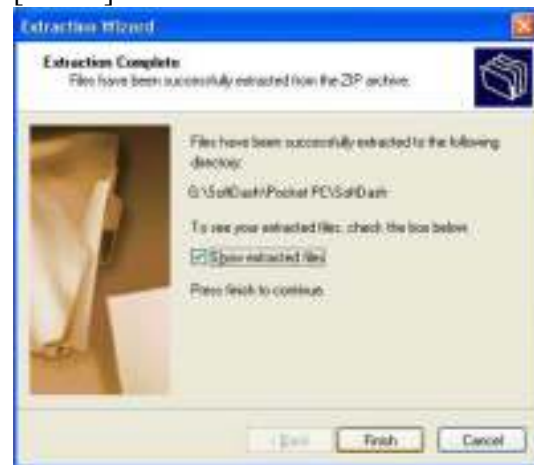
Allow several seconds for the files extract



Click [Next >]



Be sure “Show extracted files” is checked and click [Finish]



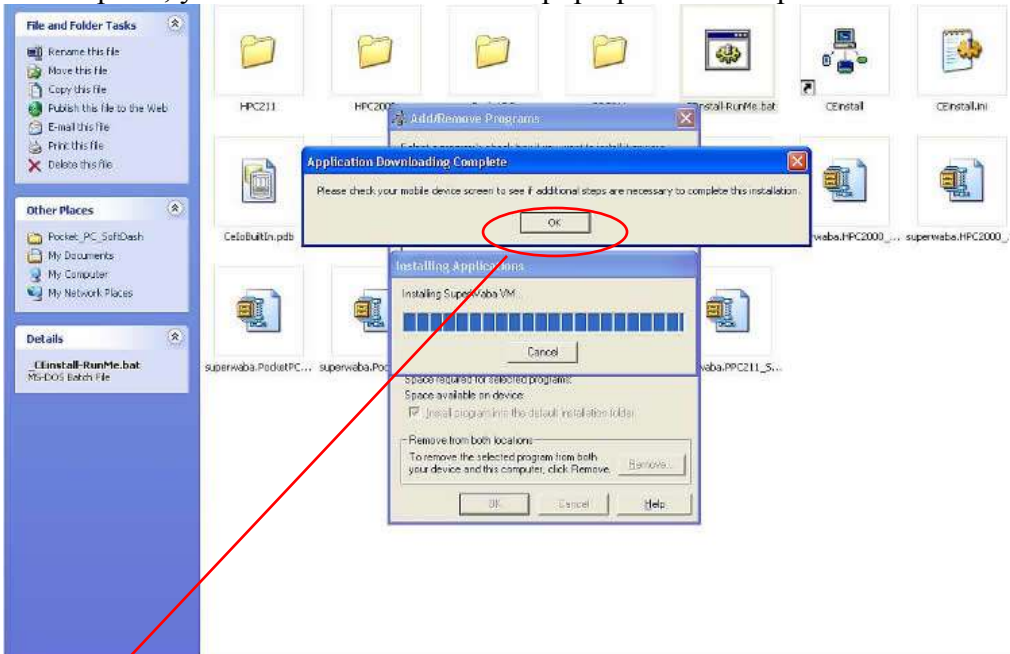
b. Installing SoftDash Onto The Pocket PC

Your screen should have only one folder as it appears below



Open the 'Pocket_PC_SoftDash' folder

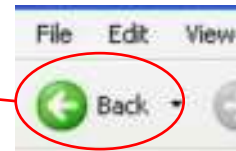
At this point, you will see several screens pop-up. Allow all processes to run!



Click the [OK] button when prompted

“Check the Pocket PC for any additional confirmations...”

Click the [Back] button located on the upper-left hand corner of the screen

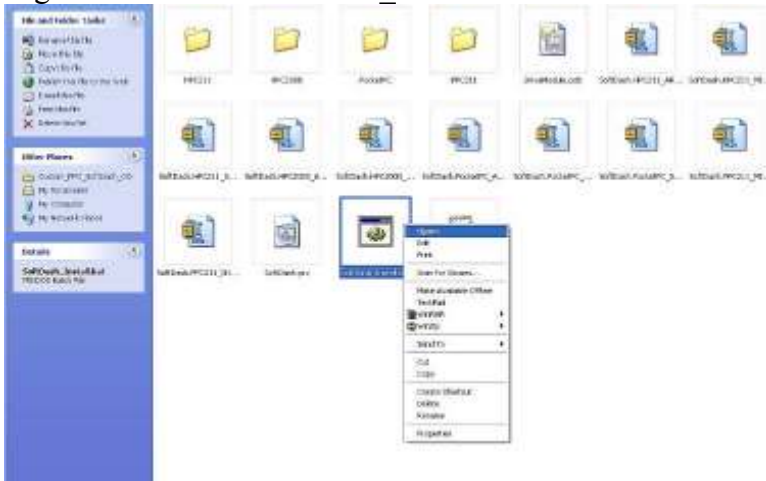


ii. SOFTDASH INSTALLATION

Open the ‘SoftDash_PPC’ folder

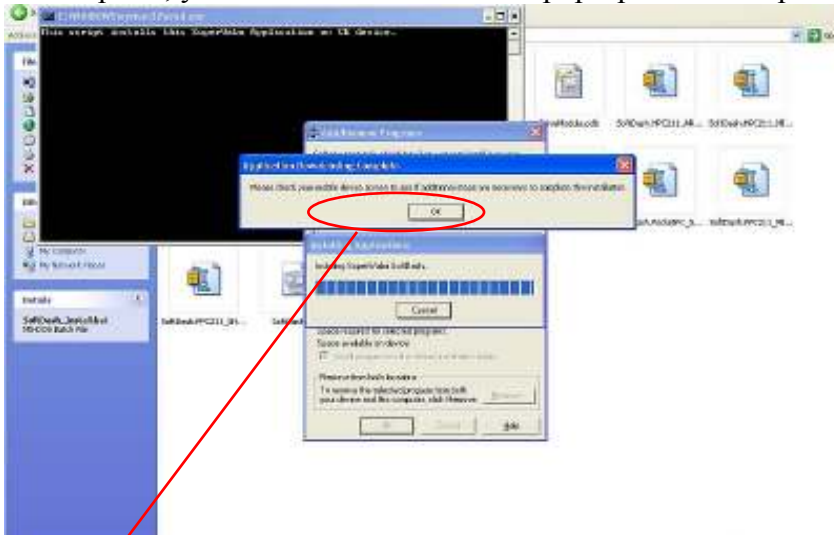


Right-Click on the 'SoftDash_Install.bat' file



Select 'Open' from the shortcut menu

At this point, you will see several screens pop-up. Allow all processes to run!



Click the [OK] button when prompted

“Check the Pocket PC for any additional confirmations...”

3. SETTING-UP ON THE POCKET PC

a. Establishing A Communication Connection

Be sure that all installations and/or file transfers between the computer and Pocket PC are complete.
Disconnect your Pocket PC from the computer.

Follow the instruction below to run SoftDash on your Pocket PC and connect to your MFC.

[STEP 1] Click on ‘Start’



IF USING A WIRED CONNECTION, SKIP 2-13 AND GO TO [STEP 14]

[STEP 2] Select ‘Settings’



[STEP 3]
Select the ‘Connections’ Tab
Click on the ‘Bluetooth’ Icon



[STEP 4]
Select the ‘Devices’ Tab
Click on ‘New Partnership...’



[STEP 5] Select your MFC...



Click the [Next] button

[STEP 6]
Enter the Passkey
“This is located on the removable sticker on the bottom of the Bluetooth® Antenna”



Click the [Next] button
And allow connection time...

[STEP 7]
Be sure that ‘Serial Port’ is checked Click the [Finish] button



[STEP 8]
Your MFC should be in this list!
(E.g. the MFC name below)



[STEP 9]
Select the ‘COM Ports’ Tab
Click on ‘New Outgoing Port’



[STEP 10]

Select your MFC



Click the [Next] button

[STEP 11] Select the Port: COM4 (if this port is not available, stop here, and refer to the FAQ section on the last page)



Click the [Finish] button

[STEP 12] Be sure that 'Secure Connection' is checked



Click the [Finish] button

[STEP 13]

Your MFC should be in this list, followed by the COM port!



Click the [ok] button (upper-right)

FOR WIRED CONNECTIONS CONTINUE HERE

“Remember to check the Pocket PC device user’s manual for the connections settings”

[STEP 14]

Select 'Programs' on the menu



[STEP 15]

Click on the 'SoftDash' Icon



Allow several seconds for SoftDash to open...

[STEP 16] Press the {Menu} button. This is the center button located on the directional-pad below the screen on the Pocket PC



[STEP 17] Under 'Options'; Select 'Connections Settings'



[STEP 18a] {WIRELESS}
Select Bluetooth Port



Click the [DONE] button

[STEP 18b] {WIRED}
Select Serial Port



Click the [DONE] button

b. Controlling the MFC

[STEP 19]

Click on 'CONTROLS'



Allow several seconds for the Control Panel to initialize...

[STEP 20]

This screen shows the first four output control buttons



[STEP 21]

This screen shows the last four output control buttons



WARNING: The following is for experts and/or installers only.
(See FAQ section on last page)

[EM-STEP 1]

Press the {Menu} button. This is the center button located on the directional-pad below the screen on the Pocket PC

[EM-STEP 2]

Under 'Options';
Select 'Controls Switch Settings'



[EM-STEP 3]

Change Control Settings Screen



[EM-STEP 4]

Select a button from the list (E.g. ACCESSORY 1)



[EM-STEP 5]

In the 'Basic' Tab, you can see what output the button controls and edit the button appearance



If necessary, click the 'Action Settings' Tab

[EM-STEP 6]

In this tab, you change the button switch type, output,



If necessary, click the [Change Push Action] button

[EM-STEP 7]

On this screen, you can edit the action settings of the button



FAQ's

4. FREQUENTLY ASKED QUESTIONS

What if I am using com port 4 or I do not see com4 in the port menu?

“Most Pocket PC devices use COM Port 4! However, some device use different ports for Bluetooth® communication” To resolve the issue we have setup SoftDash to for several other ports. (See Below)

COM Port 5: http://www.connect2car.com/softdash/downloads/ppc/SoftDash_PPC_COM5.zip

COM Port 6: http://www.connect2car.com/softdash/downloads/ppc/SoftDash_PPC_COM6.zip

COM Port 7: http://www.connect2car.com/softdash/downloads/ppc/SoftDash_PPC_COM7.zip

COM Port 8: http://www.connect2car.com/softdash/downloads/ppc/SoftDash_PPC_COM8.zip

COM Port 9: http://www.connect2car.com/softdash/downloads/ppc/SoftDash_PPC_COM9.zip

After you have downloaded the correct file, go to section 2a. above and continue from there

What is the passkey?

The passkey is the pin code for the Bluetooth® antenna, which is included with the purchase of the V2 MFC package. This code is located on the removable label on bottom-side of the Bluetooth® antenna.

Why is the Bluetooth® port closed?

Carefully, review the directions above to see if you have missed any steps during the setup process. If so, continue from where you left off. If the port still remains closed, check you Pocket PC device user's manual for any further actions needed to insure that your device will communicate via Bluetooth® or call our Connect2Car Tech Support.

Can I control multiple outputs with a single button?

No. The current Pocket PC version of SoftDash does not support this function.

Can I change my Bluetooth® Passkey?

No. The current Pocket PC version of SoftDash does not support this function.

Can I change my SoftDash skin?

Yes. However there is only one default skin available for the current Pocket PC version of SoftDash. Therefore, you must customize and create your own skin and e-mail it to support@connect2car.com with your request for a custom skin. We will then build a SoftDash with your new skin(s) and send it back to you with the re-installation instructions. You may also place an order for a customized skin with our sales department sales@connect2car.com, and place send us any picture(s) and/or idea on how that you would like your new skin to appear.

How do I do the expert steps?

If you are asking yourself this question, do not proceed into the EM-STEPS. Call or support line for a walk-through on how to do these steps. Your call may be placed in queue for a number of minutes.